



Additional Assessment Materials
Summer 2021

Pearson Edexcel GCSE in Biology (1BI0)
Foundation

Resource Set Topic 1: Key Concepts in
Biology

Questions

(Public release version)

Pearson: helping people progress, everywhere

Pearson aspires to be the world's leading learning company. Our aim is to help everyone progress in their lives through education. We believe in every kind of learning, for all kinds of people, wherever they are in the world. We've been involved in education for over 150 years, and by working across 70 countries, in 100 languages, we have built an international reputation for our commitment to high standards and raising achievement through innovation in education. Find out more about how we can help you and your students at: www.pearson.com/uk

General guidance to Additional Assessment Materials for use in 2021

Context

- Additional Assessment Materials are being produced for GCSE, AS and A levels (with the exception of Art and Design).
- The Additional Assessment Materials presented in this booklet are an **optional** part of the range of evidence teachers may use when deciding on a candidate's grade.
- 2021 Additional Assessment Materials have been drawn from previous examination materials, namely past papers.
- Additional Assessment Materials have come from past papers both published (those materials available publicly) and unpublished (those currently under padlock to our centres) presented in a different format to allow teachers to adapt them for use with candidate.

Purpose

- The purpose of this resource is to provide qualification-specific sets/groups of questions covering the knowledge, skills and understanding relevant to this Pearson qualification.
- This document should be used in conjunction with the mapping guidance which will map content and/or skills covered within each set of questions.
- These materials are only intended to support the summer 2021 series.

- 5 A student investigated the effect of enzyme concentration on the mass of product formed in one hour.

Figure 6 shows the results of this investigation.

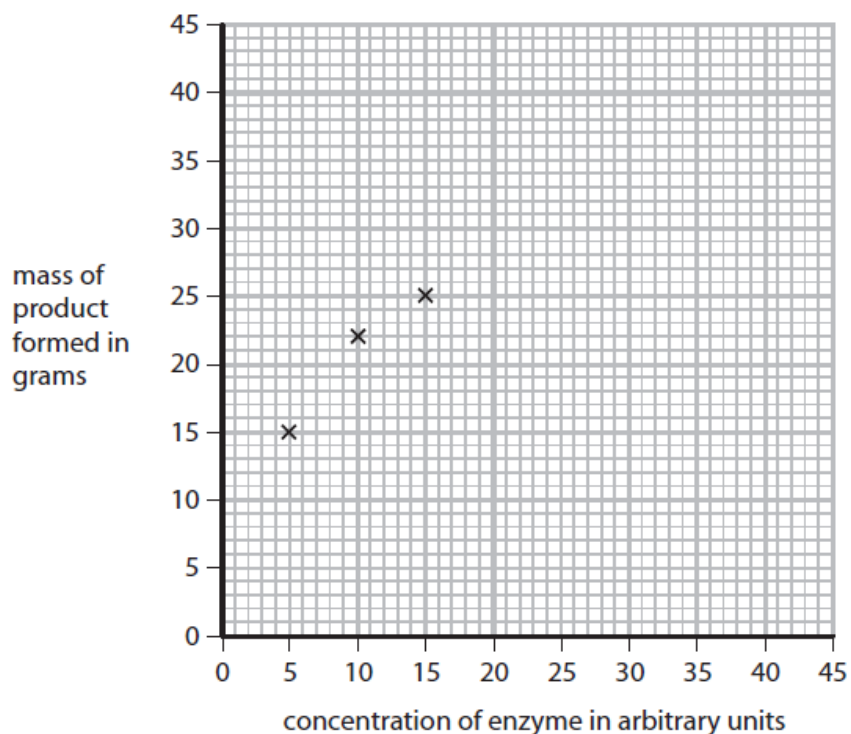
concentration of enzyme in arbitrary units	mass of product formed in grams
5	15
10	22
15	25
20	32
25	38
30	40
35	40
40	40

Figure 6

- (a) Complete the graph by plotting the points and drawing a line to show the trend in the data.

The first three points have been plotted for you.

(2)



(b) Describe the effect that enzyme concentration has on the mass of product formed.

(2)

.....

.....

.....

.....

(c) The ratio of enzyme concentration to the mass of product formed, using an enzyme concentration of 40 arbitrary units, is 1:1.

Calculate the ratio of enzyme concentration to product formed when the enzyme concentration is 5 arbitrary units.

(2)

ratio.....

(d) The investigation used the enzyme pepsin from the stomach, at a temperature of 37°C and at a pH of 7.

(i) Which statement gives one way to increase the mass of product formed in this investigation?

(1)

- A** increase the pH
- B** decrease the temperature
- C** decrease the enzyme concentration
- D** increase the substrate concentration

(ii) Explain why a temperature of 80°C was not used in this investigation.

(3)

.....

.....

.....

.....

.....

9 (a) Figure 11 shows two potato chips.

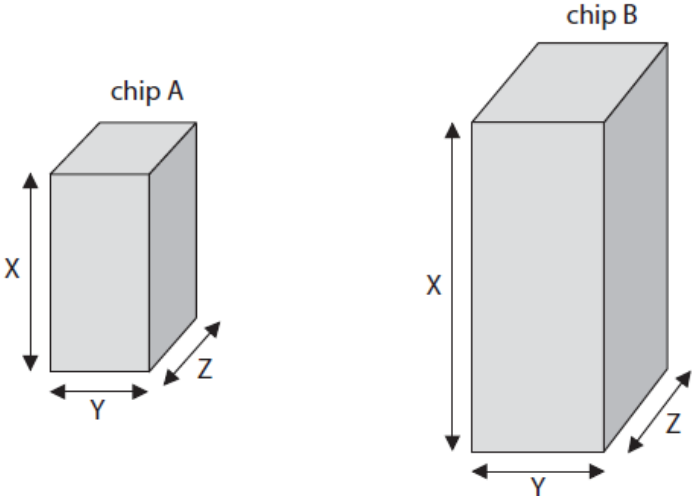


Figure 11

Figure 12 shows some information about each potato chip.

potato chip	length of X in cm	length of Y in cm	length of Z in cm	total surface area of four sides in cm ²	total surface area of top and bottom in cm ²	total surface area of chip in cm ²
A	3.0	1.5	1.5	18.0	4.5	22.5
B	5.0	2.0	2.0	?	?	?

Figure 12

(i) Calculate the total surface area of potato chip B using the formula,

$$\text{Total surface area} = 2XY + 2XZ + 2YZ$$

(2)

total surface area = cm²

(ii) The potato chips were placed in distilled water for 20 minutes.

Figure 13 shows the increase in mass of each potato chip.

potato chip	increase in mass in grams
A	0.1
B	0.3

Figure 13

Explain why potato chip B has a greater increase in mass than potato chip A.

(2)

.....

.....

.....

.....

(iii) Potato chip A is transferred from the distilled water into a concentrated salt solution.

Explain what will happen to the cells in potato chip A.

(3)

.....

.....

.....

.....

.....

.....

10b.

(b) Crop plants provide a source of energy in the form of carbohydrates such as starch and sugars.

(i) Describe the test to identify starch.

(2)

- (ii) The amount of energy in the sugars extracted from crop plants can be measured using the calorimeter shown in Figure 16.

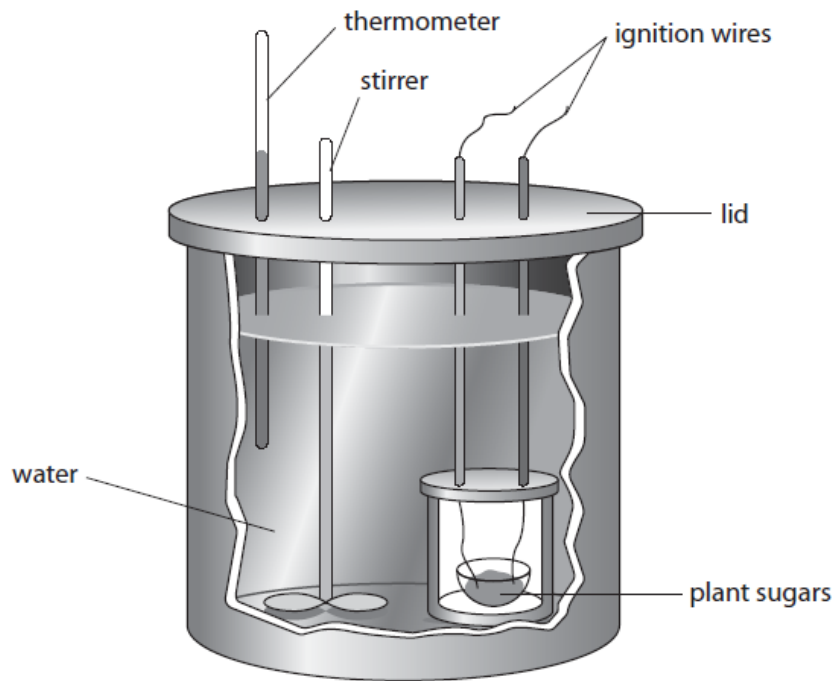


Figure 16

Explain why the calorimeter has a lid.

(2)

.....

.....

.....

.....

.....

(iii) State why it is important to stir the water in the calorimeter.

(1)

.....

.....

5 (a) Figure 7 shows the activity of the enzymes pepsin and trypsin at different pH levels.

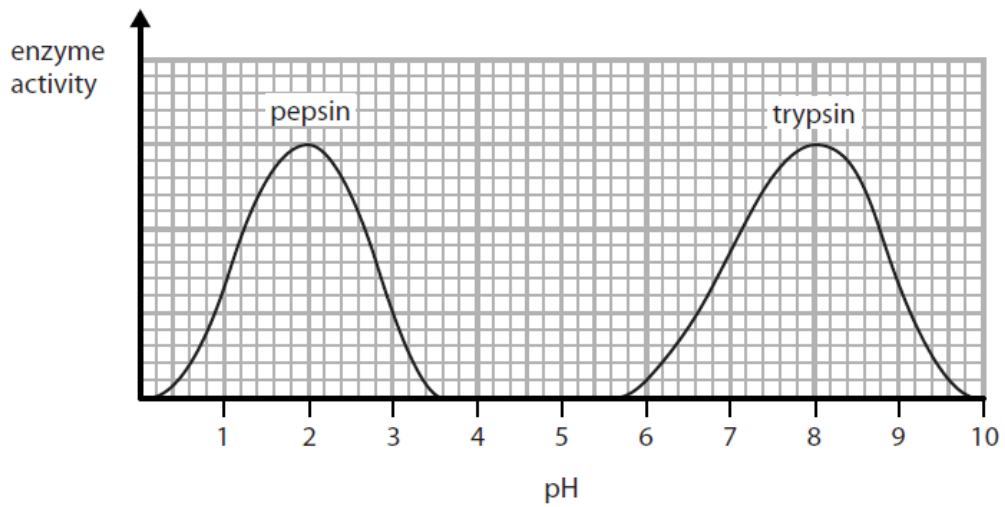


Figure 7

(i) Describe the trend in the graph for the enzyme **trypsin**.

Use data from the graph to support your answer.

(4)

.....

.....

.....

.....

.....

.....

.....

.....

.....

(ii) State the optimum pH for the enzyme **pepsin**.

(1)

.....

(iii) Pepsin only works effectively in the stomach.

Describe the conditions in the stomach that allow pepsin to work effectively.

(2)

(b) At high pH values the active site of the enzyme pepsin changes shape.

When the active site of the enzyme changes shape, the enzyme is

(1)

- A specific
- B denatured
- C digested
- D dead

(c) State what is produced when proteins are digested.

(1)

6b.

(b) Figure 9 shows two sperm cells.

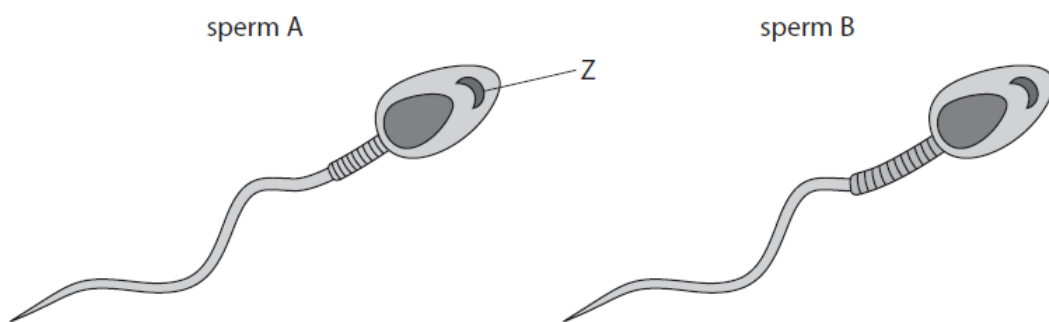


Figure 9

(i) Name structure Z.

(1)

(ii) Sperm B has a larger middle section than sperm A.

Explain why sperm B will be more likely to fertilise an egg than sperm A if they were both released at the same time.

(3)

.....

.....

.....

.....

.....

.....

7 Starch is a nutrient in food.

Starch is a source of energy.

(a) Name the enzyme that breaks down starch.

(1)

.....

(b) Enzymes from different parts of the digestive system were used to investigate the breakdown of starch.

Figure 10 shows the apparatus used in this investigation.

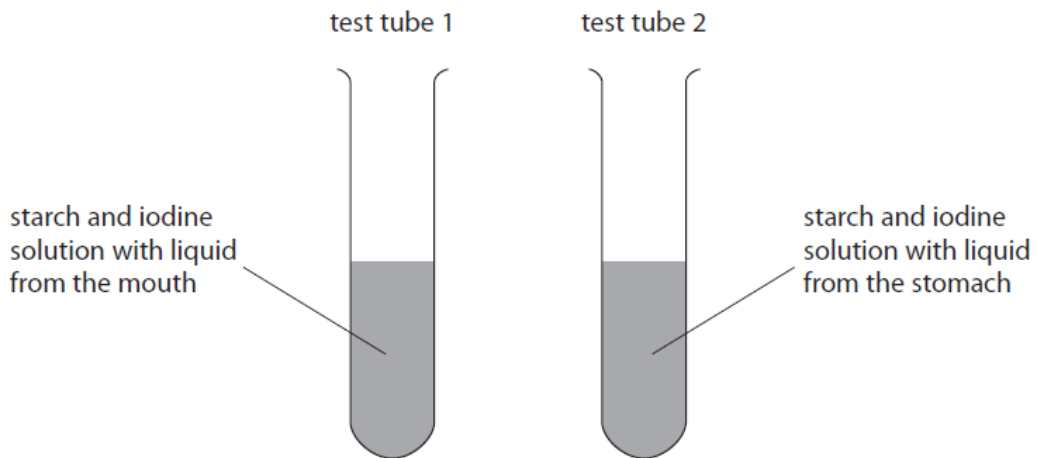


Figure 10

The colour of the contents of each test tube was recorded every two minutes for a total of ten minutes.

The results are shown in Figure 11.

time in minutes	colour of the contents of each test tube	
	test tube 1 starch and iodine solution with liquid from the mouth	test tube 2 starch and iodine solution with liquid from the stomach
0	blue-black	blue-black
2	blue-black	blue-black
4	brown	blue-black
6	orange	blue-black
8	orange	blue-black
10	orange	blue-black

Figure 11

- (i) Give **one** reason why the contents of both test tubes were blue-black at the beginning of the investigation.

(1)

.....

- (ii) Explain the results of this investigation after ten minutes.

(3)

.....

.....

.....

.....

.....

.....

.....

1 (a) Some foods contain starch.

Which chemical is used to test for starch?

(1)

- A amylase
- B ethanol
- C iodine solution
- D hydrochloric acid

(b) Benedict's solution is used to test for reducing sugars in food.

Figure 1 shows part of the method for this test.

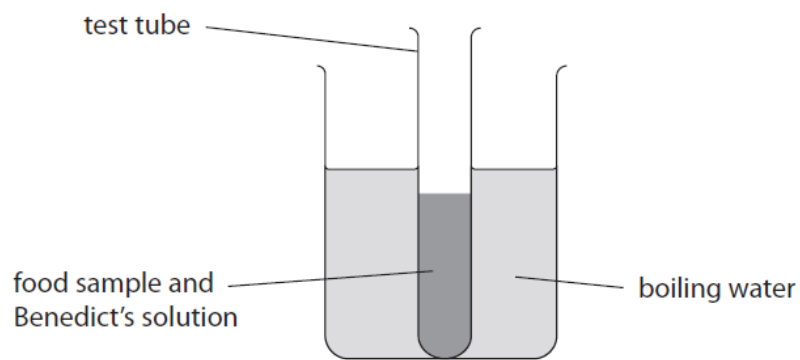


Figure 1

(i) Give **two** safety precautions needed when doing this test.

(2)

1.....

.....

2.....

.....

(ii) Give **one** reason for placing the test tube in boiling water.

(1)

.....

.....

(c) Figure 2 shows some information about the results of the test for reducing sugar.

colour of Benedict's solution after testing food sample	concentration of reducing sugar
blue	zero
green	low
yellow	↓
orange	↓
brick red	high

Figure 2

A student wanted to compare the amount of reducing sugar in three types of biscuit.

(i) Give **one** variable the student should control.

(1)

.....

.....

Figure 3 shows the student's results.

type of biscuit	colour with Benedict's solution
A	green
B	brick red
C	orange

Figure 3

(ii) State **two** conclusions that can be made from the data in Figure 3.

(2)

1.....

.....

2.....

.....

2 (a) Figure 4 shows three cells.

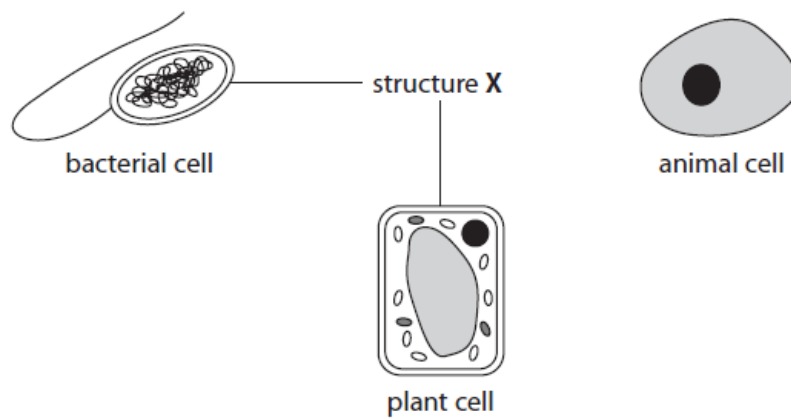


Figure 4

(i) What is structure X?

(1)

- A cell membrane
- B cell wall
- C cytoplasm
- D nucleus

(ii) The bacterial cell in Figure 4 has a flagellum.

State the function of a flagellum.

(1)

(iii) Give **one** other difference between the bacterial cell and the animal cell shown in Figure 4.

(1)

(b) Substances move into and out of cells.

How does oxygen move into and out of cells?

(1)

- A transpiration
- B active transport
- C diffusion
- D osmosis

(c) A plant leaf cell is 0.04 mm long.

Calculate the length of the image after this cell has been magnified 500 times.

(2)

length of image =mm

- 4 (a) A student placed three different sized cubes of agar jelly into separate beakers containing the same concentration of hydrochloric acid.

The cubes contained a pink indicator.

This indicator becomes clear when in contact with an acid.

Figure 7 shows the results of the investigation after the cubes had been in the acid for 120 seconds.

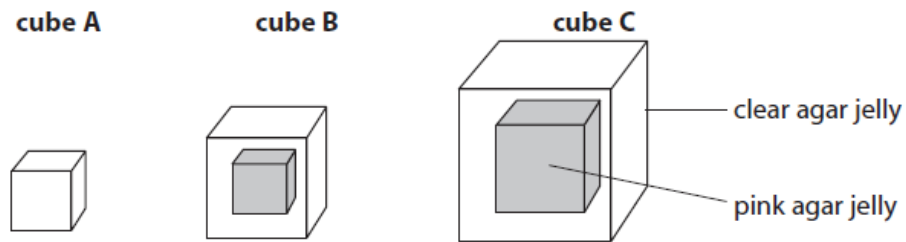


Figure 7

- (i) The distance from the outside of cube B to the pink area was 3mm.
Calculate the distance diffused by hydrochloric acid in **one** second.

(2)

..... mm

- (ii) The student wanted to confirm their results.

Give **one** improvement the student should make to this investigation to confirm their results.

(1)

.....

.....

.....

(b) Devise a method, using cubes of agar jelly, to investigate how temperature affects the rate of diffusion.

(3)

(c) Some substances move into and out of cells by active transport.

Which is the correct description of the movement of a substance by active transport?

(1)

- A against a concentration gradient using energy
- B down a concentration gradient using energy
- C against a concentration gradient without using energy
- D down a concentration gradient without using energy

- 6 (a) A student investigated the activity of a human enzyme at different temperatures. The student measured the mass of product formed after 10 minutes at different temperatures. Figure 10 shows the results of this investigation.

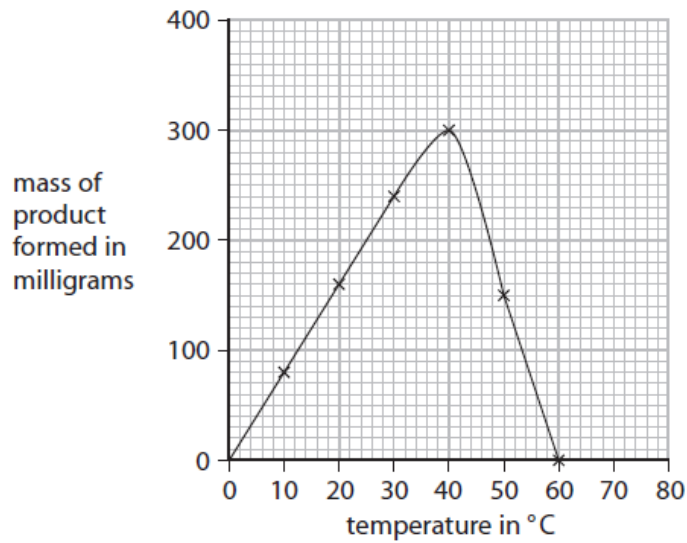


Figure 10

- (i) Describe the trends shown in Figure 10.

(2)

.....

.....

.....

.....

.....

- (ii) Explain the results obtained for temperatures from 40°C to 60°C.

(2)

.....

.....

.....

.....

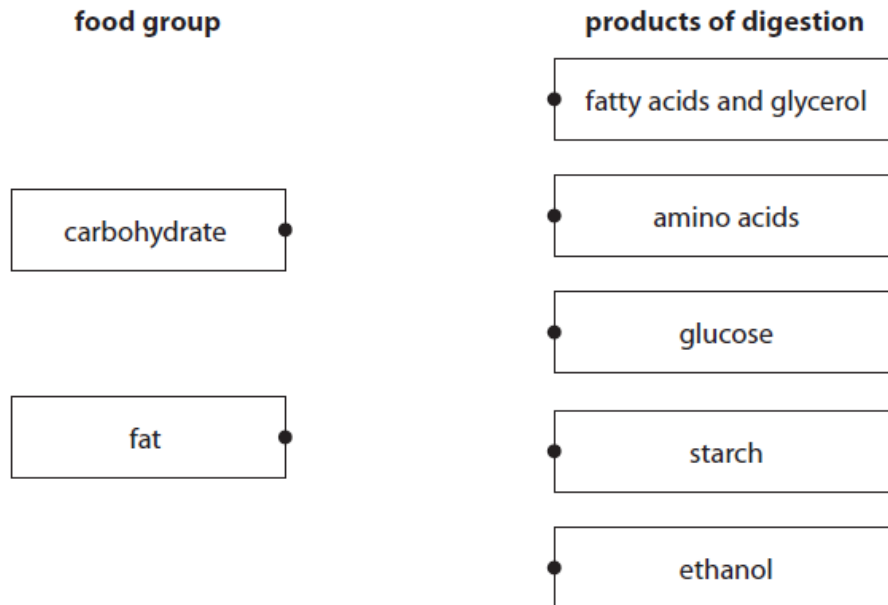
.....

.....

(b) Some enzymes are involved in the breakdown of food substances.

(i) Draw **one** straight line from each food group to the products of digestion for that food group.

(2)



(ii) Which enzyme breaks down fat?

(1)

- A carbohydrase
- B amylase
- C protease
- D lipase

(c) Figure 11 shows an enzyme and two substrates, P and Q.

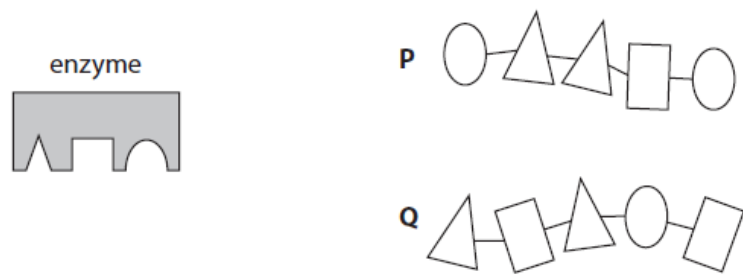


Figure 11

Explain the reason why no product will be formed if the enzyme is mixed with substrate **Q**.

(3)

.....

.....

.....

.....

.....

.....

.....

.....

9bi-ii.

(b) Figure 15 is a drawing of a eukaryotic cell.

Structure **Z** is found in plant leaf cells.

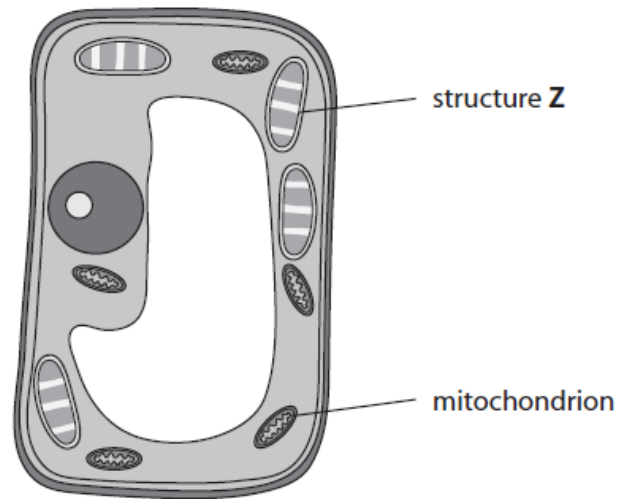


Figure 15

(i) Name structure **Z**.

(1)

.....

(ii) Give **one** function of the mitochondrion.

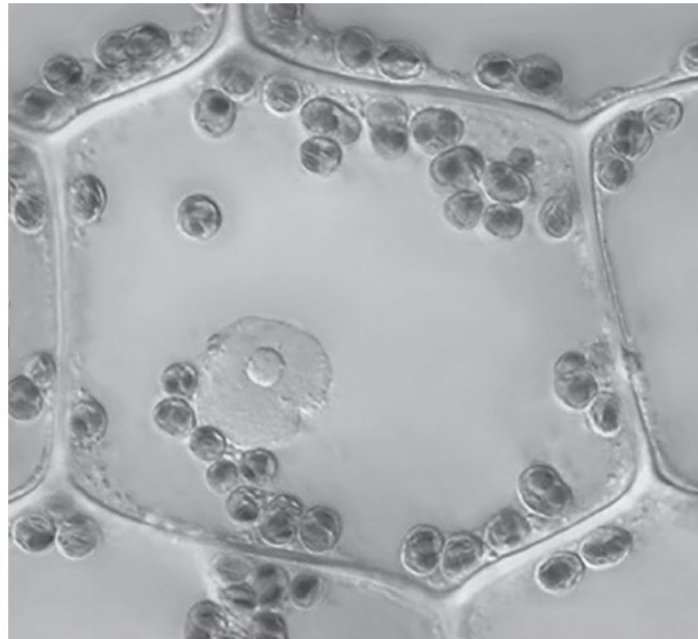
(1)

.....

.....

.....

6 Figure 10 shows a plant cell as seen under a light microscope.



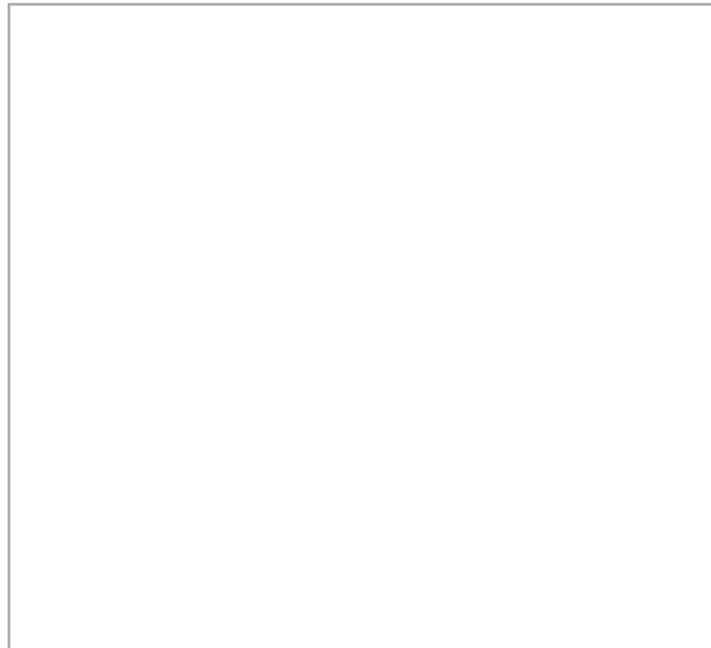
(Source: © HERVE CONGE, ISM/SCIENCE PHOTO LIBRARY)

Figure 10

(a) Draw this plant cell in the box below.

Label **three** parts of this cell.

(4)



(b) Mitochondria cannot be seen with a light microscope.

What is the function of mitochondria in a plant cell?

(1)

- A respiration
- B make proteins
- C photosynthesis
- D store water

(c) A student wanted to investigate the movement of water into and out of cells in potatoes.

The student had the equipment shown in Figure 11.



Figure 11

The test tubes in the rack contain different concentrations of sodium chloride solution.

The solutions were 0.1 M, 0.2 M, 0.3 M, 0.4 M and 0.5 M sodium chloride solution.

The test tube in the beaker contains distilled water.

There are three potato chips in each of the six test tubes.

- (i) State why the test tube in the beaker only contains distilled water and three potato chips.

(1)

(ii) State **two** variables that need to be controlled in this investigation.

(2)

1.....

.....

2.....

.....

(iii) Explain why the chips in the 0.5 M sodium chloride solution lost mass.

(3)

.....

.....

.....

.....

.....

.....

.....

TOTAL= 89 MARKS